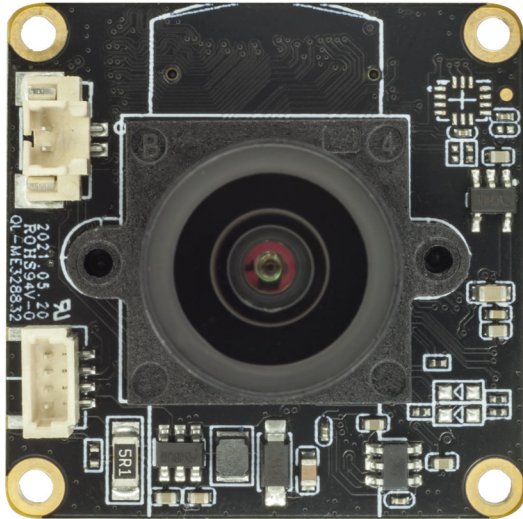


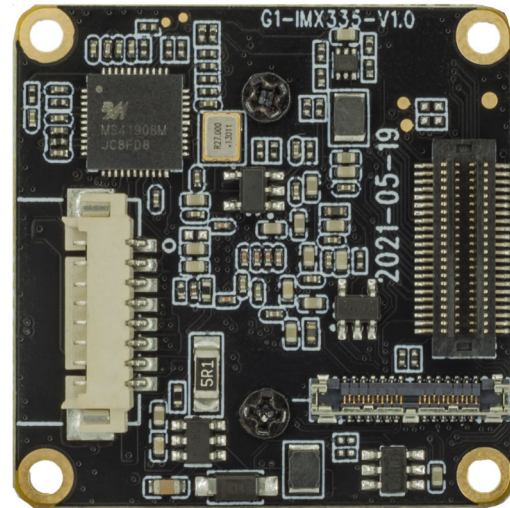


## KLT-CMFL50101-IMX335 V1.0

### 5.14MP Sony IMX335 Fixed Focus Camera Module



Front View



Back View

### Overview

The KLT-CMFL50101-IMX335 V1.0 camera module uses the Sony IMX335 high-quality CMOS image sensor, which has a diagonal of 6.52mm (1/2.8 type) CMOS image sensor, a pixel of 2.0um, a color square pixel display, and an effective pixel of 5.14 megapixels.

When used with the master board, it can support shooting 5MP pixel high-definition photos and up to 2.7K@30FPS video. The board frame size is 32x32mm, and the size from the top of the module lens to the PCB board is 32x32x27.62mm.



## KLT-CMFL50101-IMX335 V1.0

### 5.14MP Sony IMX335 Fixed Focus Camera Module

#### Specifications

<b>Model No.</b>	<b>KLT-CMFL50101-IMX335 V1.0</b>
<b>Image Sensor</b>	IMX335
<b>Image Sensor Type</b>	CMOS
<b>Effective Pixels</b>	5.14 Megapixels
<b>Sensor Size</b>	1/2.8"
<b>Pixel Size</b>	2.0 um x 2.0 um
<b>Video Frame Rate</b>	4K@30FPS/60FPS (Differential) 2.7K@30FPS 1080P@30FPS/60FPS 720P@60FPS/120FPS
<b>Photo Resolution (with Master Board)</b>	20MP (5200x3900) (Differential) 13MP (4160x3120) (Differential) 12MP (4000x3000) (Differential) 10MP (3648x2736) (Differential) 8MP (3264x2448) (Differential) 5MP (2592x1944) Default 3MP (2048x1536) 2MP (1920x1080)
<b>Operating Temperature</b>	-10°C to +60°C
<b>Storage Temperature</b>	-20°C to +80°C
<b>Humidity</b>	20% to 80%
<b>PCB Dimensions</b>	32 x 32 mm
<b>Module Size</b>	32 x 32 x 27.62 mm
<b>PCB Screw Hole Spacing</b>	28 x 28 mm
<b>PCB Screw Hole Diameter</b>	2 mm

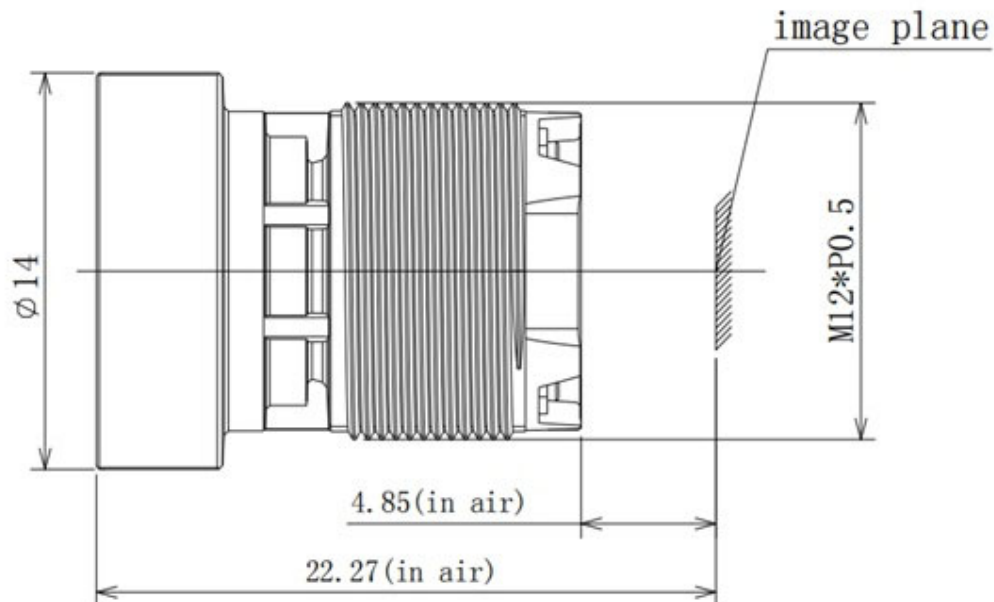
## KLT-CMFL50101-IMX335 V1.0

### 5.14MP Sony IMX335 Fixed Focus Camera Module

#### Lens Specifications

Lens Model No.	HX50101
EFL (Focal Length)	4.46 mm
TTL (Total Length)	22.27 mm
F. No.	1.65
Lens Barrel Thread	M12 x P0.5
Lens Construction	3G5P
Diagonal View Angle (DFOV)	88.9° (DFOV)
Horizontal View Angle (HFOV)	69° (HFOV)
Vertical View Angle (VFOV)	50.8° (VFOV)
Chief-Ray Angle	10.9°
Distortion	-25.80%
Relative Illumination	>66.5%
Lens Operating Temperature	-40°C to +85°C
Lens Storage Temperature	-40°C to +95°C

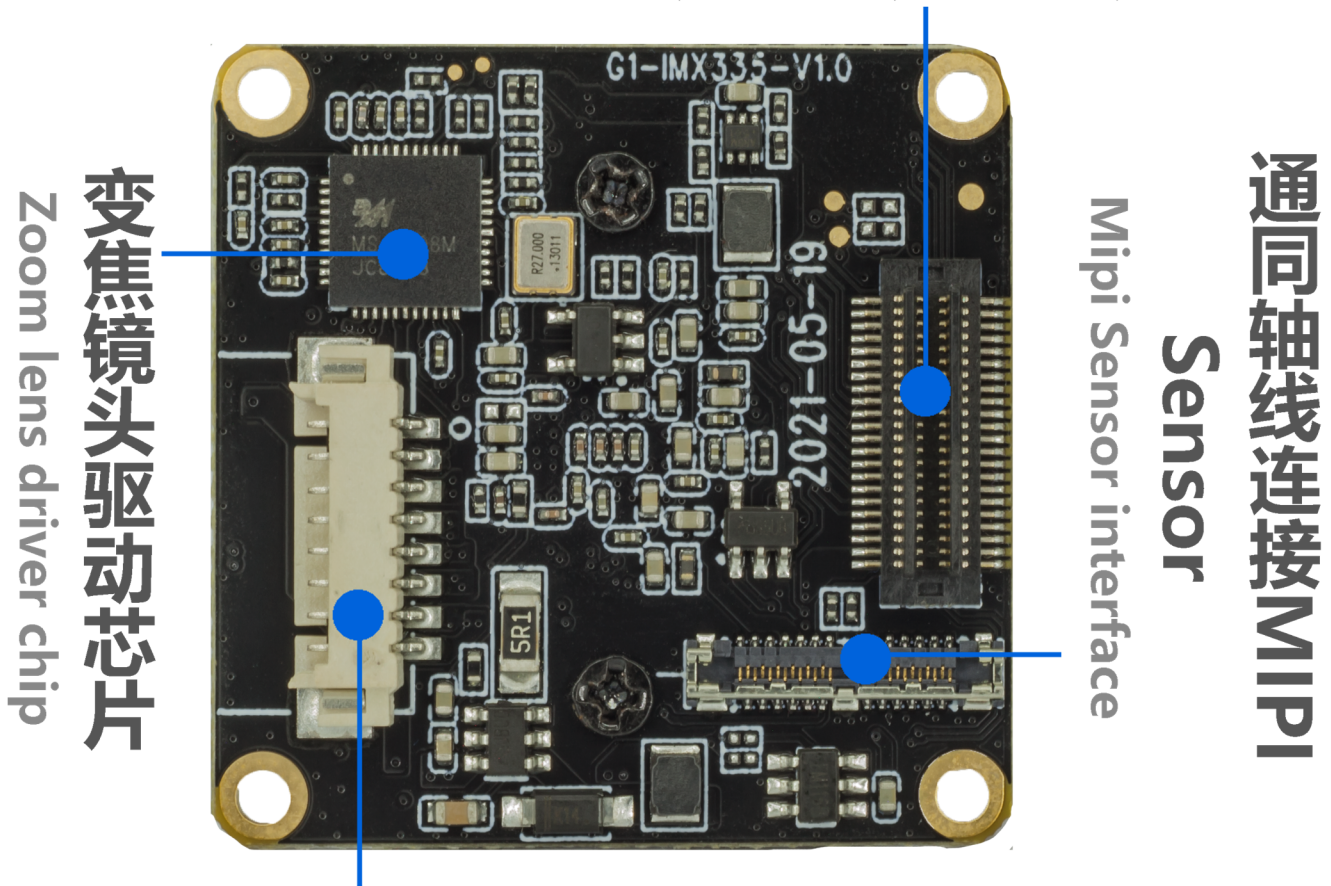
#### Lens Drawing



**KLT-CMFL50101-IMX335 V1.0**  
**5.14MP Sony IMX335 Fixed Focus Camera Module**

**通过板对板连接器支持自动AF变焦镜头  
Sensor、IR-CUT、LED等**

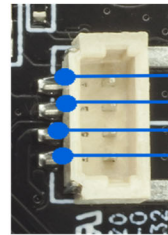
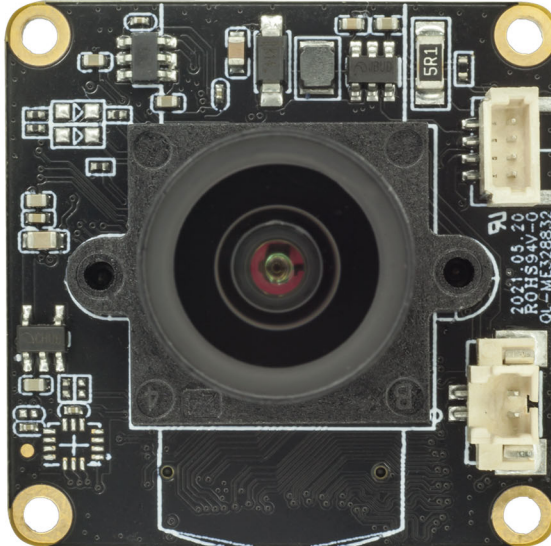
Connect AF Zoom Lens、Sensor、IR-CUT、Led



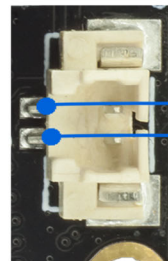


## KLT-CMFL50101-IMX335 V1.0

### 5.14MP Sony IMX335 Fixed Focus Camera Module



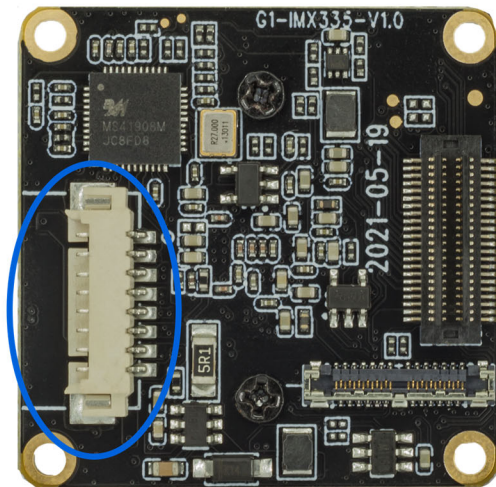
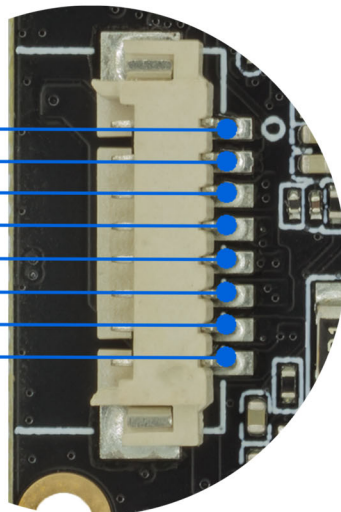
LED B -  
LED B +  
LED A -  
LED A +



IR-CUT -  
IR-CUT +

The two groups of fill light interfaces support the expansion of infrared lights and white light boards to provide fill light for the device. Note: The IR-Cut filter switch interface is used by lenses with filters, but this camera module does not support this function.

ZOOM A -  
ZOOM A +  
FOCUS A -  
FOCUS A +  
FOCUS B +  
FOCUS B -  
ZOOM B -  
ZOOM B +

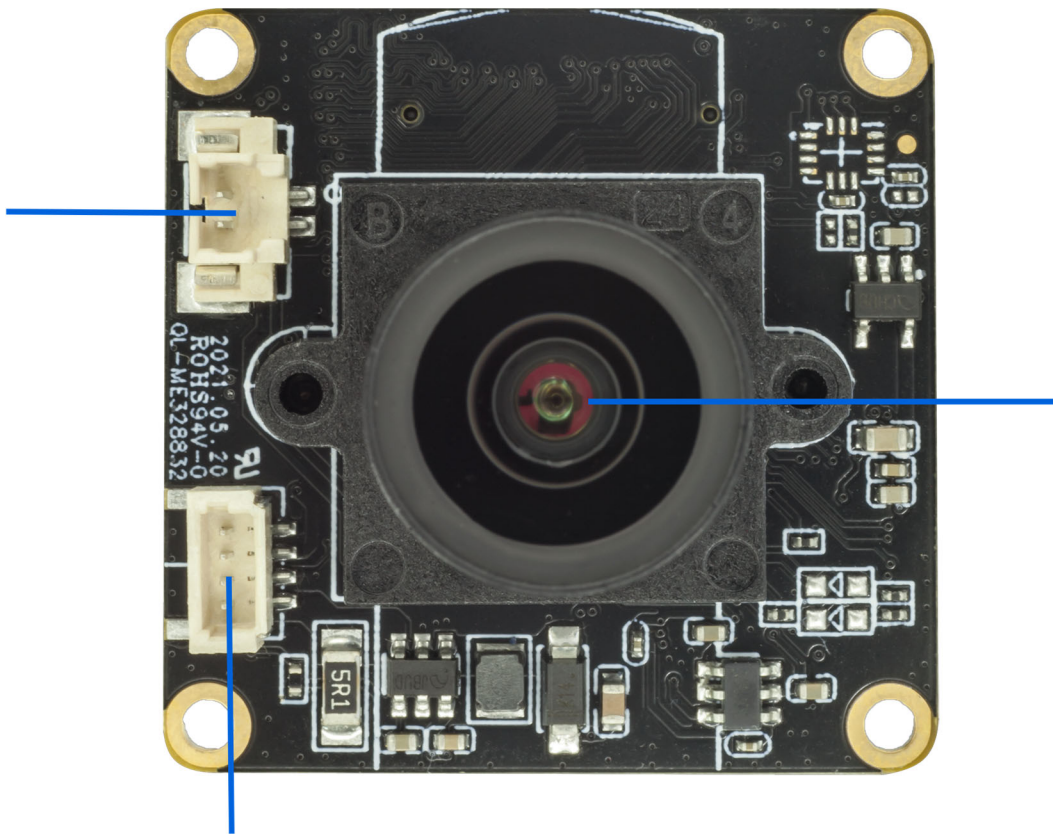


The auto focus interface leads to the connection automatically focusing motor to achieve the zoom function, but this camera module does not support zoom function.



**KLT-CMFL50101-IMX335 V1.0**  
**5.14MP Sony IMX335 Fixed Focus Camera Module**

**濾光片切换器接口**  
IR-CUT INTERFACE



**HX50101 镜头模组**

**两组LED补光灯接口**

**LEDS \* 2 INTERFACE**

Note: You can choose between TBT board-to-board socket or connecting to the master board via coaxial cable. Users can use them flexibly according to the construction scenarios.